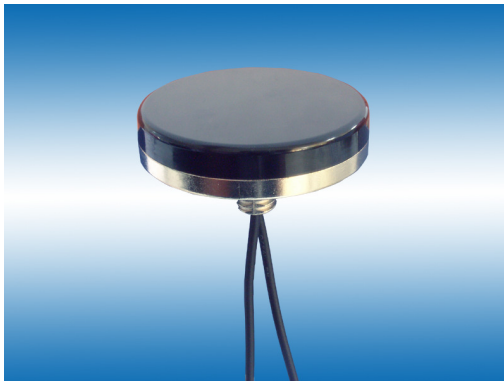


Qual-Band Antenna Series

Model: AU-3C-GSM

High performance GPS patch antenna with cutting-edge low noise amplifier. Low profile, waterproof, suction cup mounting



This **AU-3C-GSM**, a member of our mobile antenna series coming up with dual-band features, is designed to simplify the need for an AVL or Fleet Management antenna systems. The combination of a high gain GPS antenna and a low profile and covert GSM antenna is highly ideal for those

applications that require durability, small in size, covert installation and ruggedized construction, such as covering vehicle roof and trunk lid interior deck or dashboard.

=====
Low Noise Figure/ Fully Weatherproof/ Ultra-high Sensitivity
/Compact Construction/ Excellent Temperature Stability
 =====

Specifications:

| | GPS Antenna | GSM Antenna |
|---------------------|--|-------------------------------------|
| Features | High performance GPS patch antenna with state-of-the-art low noise amplifier | Quad band GSM 850/900/1800/1900 MHz |
| Size | 64.5mm(D) x 14mm(H) | |
| Frequency | 1575.42 MHz | 824~960 & 1710~1990 MHz |
| Polarization | RHCP (right hand circular | -- |

©2008 San Jose Technology, Inc. All specifications subject to change without notice.

| | | |
|------------------------------|---|--|
| | polarization) | |
| Gain | 27 dB typically | 1.0 dBi |
| Noise Figure | 1.8 max. | ----- |
| Attenuation | 20dB min. @ F0+/-50MHz | ----- |
| Band Width | 10 MHz | 72 MHz for frequency of 824~896 MHz 80 MHz for frequency of 880~960 MHz 170 MHz for frequency of 1710~1880 MHz 140 MHz for frequency of 1850~1990 MHz |
| VSWR | < 1.5 | < 1.5 |
| Impedance | 50 ohm | 50 ohm |
| Power Supply | Power Consumption: 2.7~5.5 VDC / 13 mA | Power Handling Capacity: 10 W |
| Cable & Connector | 3m RG-174 FME Connector | 3m RG-174 SMA Connector |
| Operating Temperature | -40°C ~+85°C | -40°C ~+85°C |
| Storage Temperature | -45°C ~+100°C | -45°C ~+100°C |

©2008 San Jose Technology, Inc.
 All specifications subject to change without notice.

Welcome custom design for AMPS frequencies!